

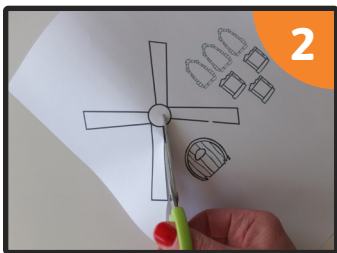
Windmill

You will need:

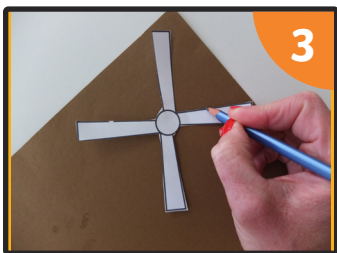
- windmill template
- card
- toilet paper roll
- pencil
- poster paints
- paintbrush
- coloured pencils
- plate for paint
- split pin
- white glue (such as PVA)
- glue spreader or brush
- scissors
- small piece of sticky tack



1 Paint the toilet paper roll and set this aside to dry.

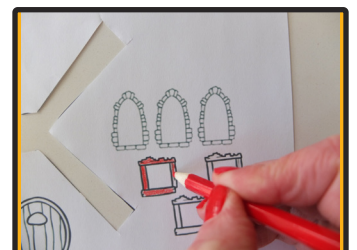


2 Print out the windmill template and cut out the shapes carefully, using scissors.



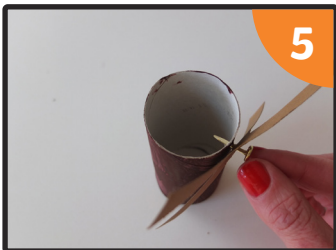
Place the windmill blades onto a piece of card, draw around them and carefully cut them out.

If you are using the black and white template, colour the doors and windows in now.

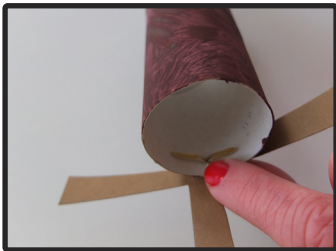




When the paint is dry, push the pencil through the top of the toilet paper roll and onto the piece of sticky tack, to make a small hole. Do the same to make a small hole in the middle of the windmill blades.



Push the windmill blades onto the split pin and through the small hole at the top of the toilet paper roll. Then, bend the two parts of the split pin back on themselves.



Finally, glue the windows and door onto your windmill.



Windmill

You will need:

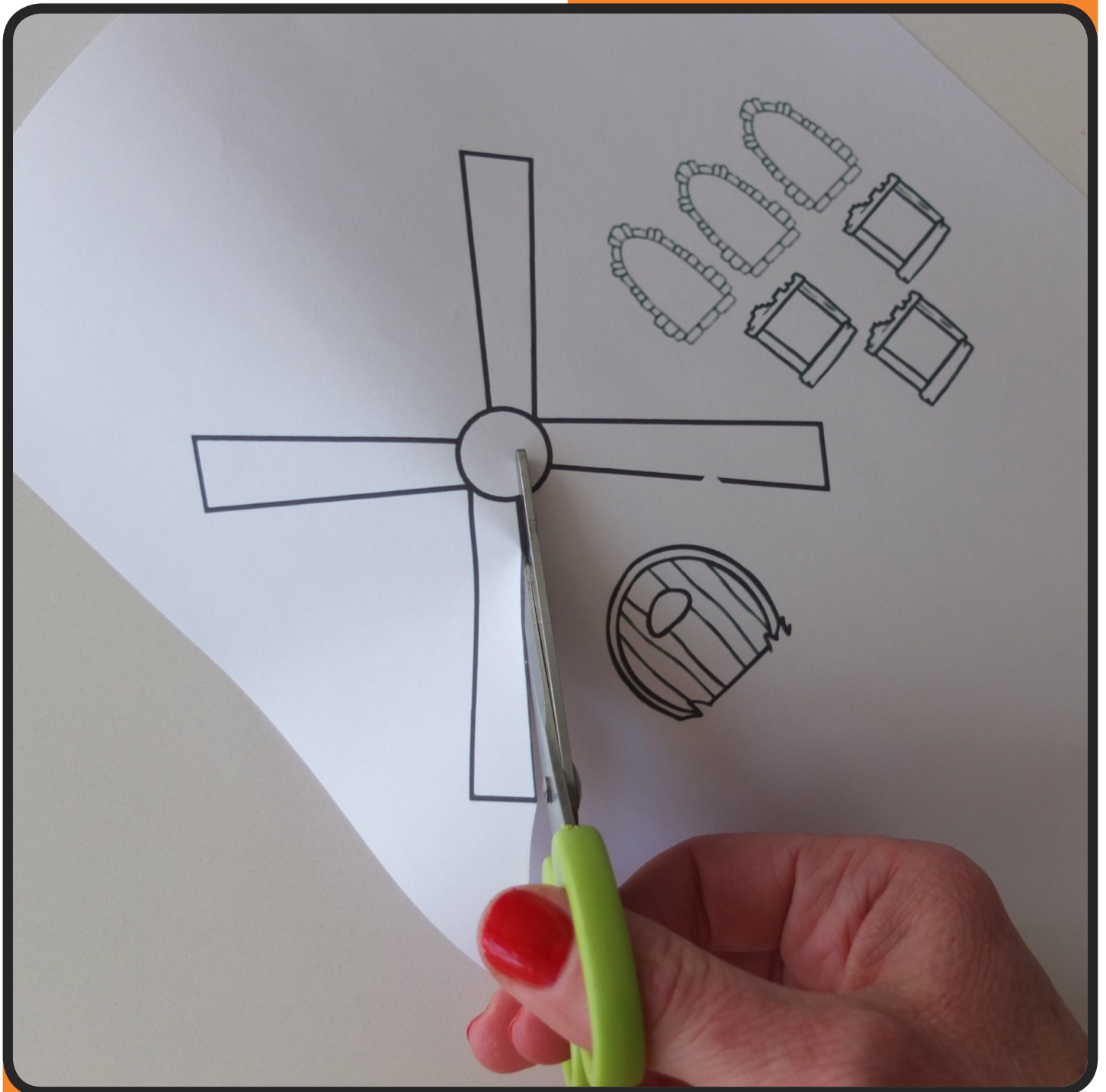
- windmill template
- card
- toilet paper roll
- pencil
- poster paints
- paintbrush
- coloured pencils
- plate for paint
- split pin
- white glue (such as PVA)
- glue spreader or brush
- scissors
- small piece of sticky tack





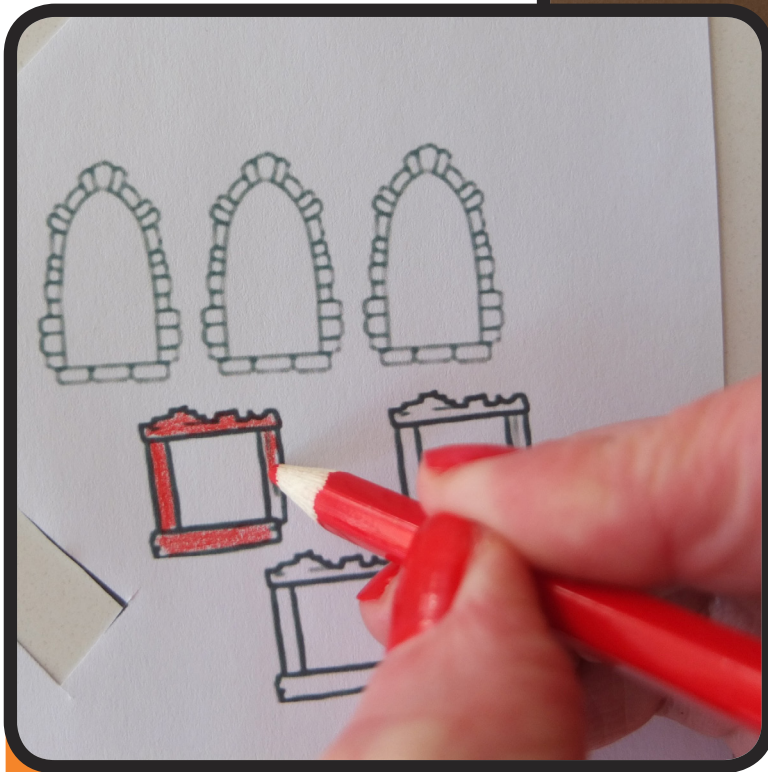
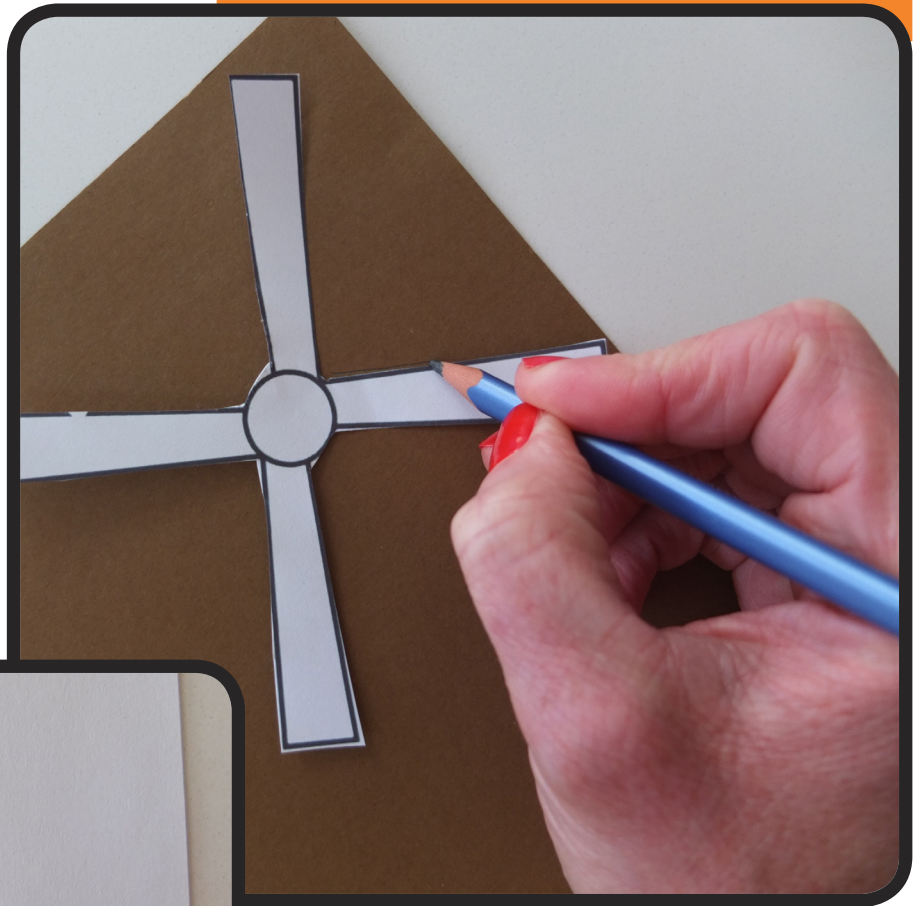
Step 1

Paint the toilet paper roll and set this aside to dry.



Step 2

Print out the windmill template and cut out the shapes carefully, using scissors.



Step 3

Place the windmill blades onto a piece of card, draw around them and carefully cut them out.

If you are using the black and white template, colour the doors and windows in now.



Step 4

When the paint is dry, push the pencil through the top of the toilet paper roll and onto the piece of sticky tack, to make a small hole. Do the same to make a small hole in the middle of the windmill blades.



Step 5

Push the windmill blades onto the split pin and through the small hole at the top of the toilet paper roll. Then, bend the two parts of the split pin back on themselves.



Step 6

Finally, glue the windows and door onto your windmill.

